

## What's new in pressSIGN version 5

pressSIGN version 5 is a radical upgrade with a host of new features to make pressSIGN a more powerful tool for all of our users.

### Measure from 1 to 16 colour jobs

pressSIGN-Pro version 5 gives printers and customers who require multi spot colour printing the solution they need. Print accurate spot colours quickly and easily. Ensure you are setting the correct density and meeting your customer's needs.

No more visual assessment from a formula guide. pressSIGN contains the official PANTONE® libraries. Additional custom spot colour libraries can be added by importing customers' libraries or measuring existing patches.

pressSIGN-Pro clients can measure from one to sixteen colours with pressSIGN showing the operator how to adjust each colour to get the best possible match.

### Dynamic Density Adjustment (DDA)

pressSIGN's DDA shows the operator how to achieve the lowest possible Delta E. Measure the control strip and pressSIGN DDA uses the current colour measurement to show the operator the percentage adjustment he needs to make - and it's always based on today's print condition. From one colour to sixteen, pressSIGN guides the operator throughout the process.



Color bar generator

### Colour Bars in pressSIGN 5

pressSIGN 5 adds a colour bar generator. Create your own colour bar including slur and non-measurable patches to match an existing colour bar configuration.

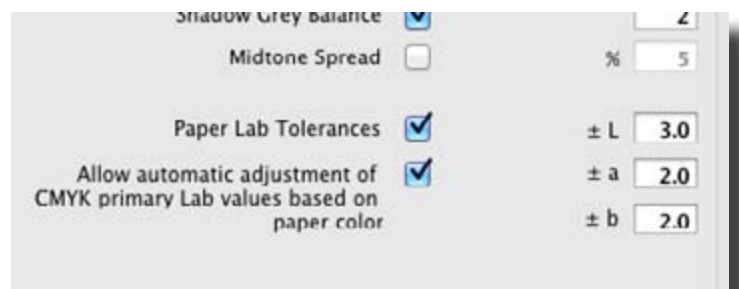
Measure multi-line colour bars such as GRACol P2P, IT8 chart or FOGRA/UGRA Media wedge. Import targets like these based on CGATs layout files and check print performance in many different ways.

Create a chart containing tint percentages from 1-99% in as many steps as required. Export the tonal curve to the selected workflow.

Create a set-up for two pass printing. Ideal for two colour presses who want to print four-colour work to an international standard.

### Automatic substrate adjustment

pressSIGN has long been able to adjust the print target to match the actual substrate in use. However this has required the user



Section of Tolerances page - auto paper adjustment

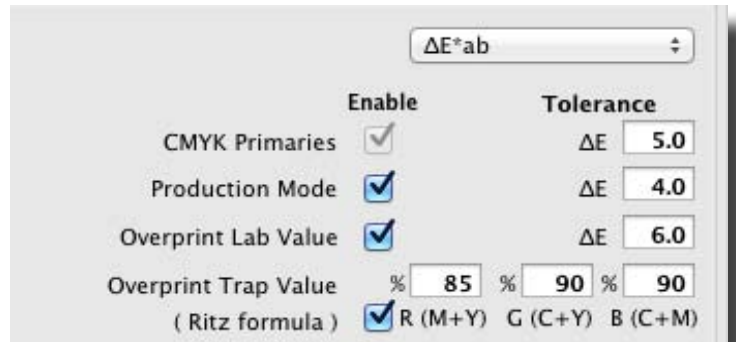
to creates a new print target with each paper stock. A new option in pressSIGN 5 allows users to select automatic substrate adjustment.

The target Lab values are then amended based on the paper. Adjusting the target based on the paper colour gives a better visual representation of the original concept and design.

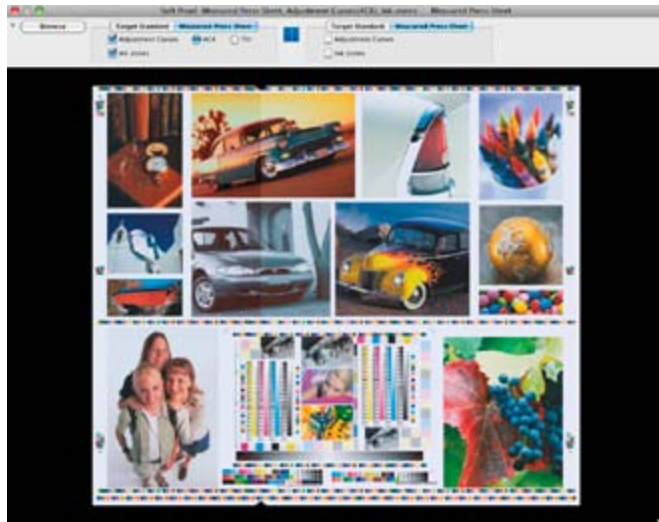
### OK Sheet

The new production mode in pressSIGN-Pro lets users set the OK sheet. The consistency against the OK sheet then becomes an additional criteria in the scoring system, with it's own tolerance.

The image on the right shows a detail from the tolerances window with the Production mode set to a Delta E of 4. Users can customise the tolerances and scoring.



Capture deviations from the original standard as well as monitor the consistency of the measurements during the print run.



*Soft proof for Trends & Pro clients*

### Soft proof - live update

pressSIGN-Pro includes soft proof module for all Trends and Pro clients. Operators benefit from the soft proof particularly when there is no hard copy proof.

The production manager can use the soft proof to compare the printed sheet with the print target and simulate the impact of an update to the tonal curves (4CX or TVI).

Using pressSIGN Internet Server press passes can take place from anywhere in the world.

pressSIGN's chat service enables buyer, manager and operator all to communicate together.

pressSIGN measurement's are updated automatically in each client that has the job open. Each time a new reading is made then the soft proof is automatically updated for all observers.

### New Full Sheet View

The full sheet view for pressSIGN-Pro has several new features, including the ability to turn on or off the OK sheet view, disable ink zones and set the adjustment view to Lab or Density.

The ability to set tolerances and measure the consistency of the print run is important for both printers and their customers. pressSIGN-Pro 5 now lets users set an OK sheet. This will then show the operator how to adjust the density to maintain the consistency of the job. Toggle between original target view and OK sheet view so you never need to lose sight of the original print target.



*Disable ink zones*

It can be very difficult to maintain constant ink levels in the colour bar when there is little or no image in that area. This can result in unnecessary low scores. pressSIGN-Pro 5 lets users turn off ink zones where there

is insufficient coverage to maintain even density. When ink zones are turned off this is reflected in the soft proof.

pressSIGN-Pro 5 allows users to choose between Lab and Density view of the full sheet. This gives the user the choice of which way to view the ink zone adjustments.

### Multi Site Internet Server (MSIS)

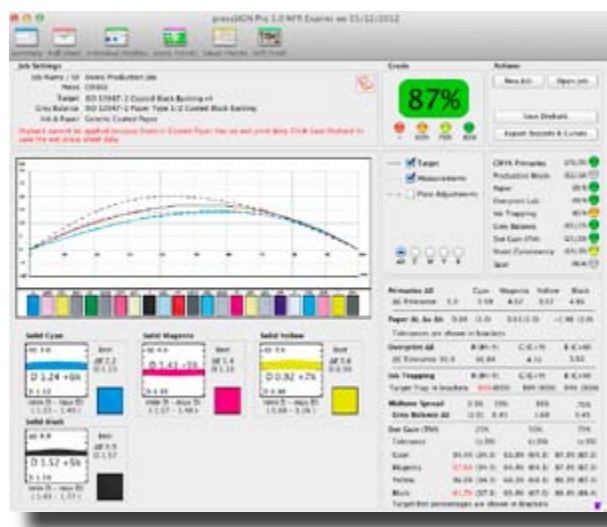
pressSIGN 5 MSIS allows the creation of multiple sites for large print companies with multiple locations or for large scale brand managers/ print buyers who want to track the print performance across multiple print suppliers.



### MSIS for Brand Managers

pressSIGN MSIS enables brand managers to control and manage the print process. Brand managers can set the standards that apply to their campaigns and the print process they use. pressSIGN MSIS allows the manager to clearly see how his suppliers are meeting these standards.

pressSIGN MSIS is hosted by the brand management company and each measurement taken by suppliers is automatically read into the server. This data can then be analysed to provide a production report showing the overall score of the job, the timings of each measurement in the job and trend analysis graphs to show any problems that might have been missed. pressSIGN's MSIS reporting functions allow the manager to compare performance of sites and printing devices as well as ranking suppliers. Managers can compare campaigns for their quality and costs.



The pressSIGN MSIS improves communication between brand manager and print supplier. The soft proofing module allows the brand manager to see how well the job is being printed compared to the target. No matter where the job is being printed the brand manager can sit in his office and make a visual judgement about its acceptability.

The integrated chat facility allows rapid communication between client, brand manager and print supplier. This enables the client to communicate directly with the producer through pressSIGN MSIS during production making it much easier to pass pass remotely.

Brand Managers can allow their clients access to the production reports, soft proofing and all the other features of pressSIGN, but this is restricted to the jobs allocated to that client.

pressSIGN contains the Pantone® libraries so brand managers can be assured that the job is being assessed using Pantone's own spectral data. Managers can create their own spot colour libraries and provide these globally or on a per site for use on particular campaigns.

### MSIS for Multi-Site Print Companies

The print production manager can now properly moni-



tor production quality across the whole enterprise. Whether his print sites are all in one country or scattered across the world, pressSIGN 5 MSIS gives him control. Press pass for important clients, set the standards, monitor the standards and production wastage all from one central location.

### **Live Update**

pressSIGN automatically updates measurements in the Trends clients. When viewing a job on the server from a Trends or Pro client, either remotely with pressSIGN MSIS or locally, each new measurement is added to the list in the 'Job Window'.

### **New Pantone Colours**

Pantone has added 336 new colours to the PANTONE® Plus libraries and these are all included in pressSIGN 5.

### **New Layout in pressSIGN 5**

pressSIGN-Pro has added the soft proof icon and individual patch icon to the tool bar.

Production mode has been added to the list of measurement criteria. Production mode measures the consistency of the print to the OK sheet.

When printing multiple spot colours the window expands to allow you to display the full listing of spot colours in the job up to the size of the screen.

Mid-tone spread is now a measurement criteria that can be added to the press standard and reported.

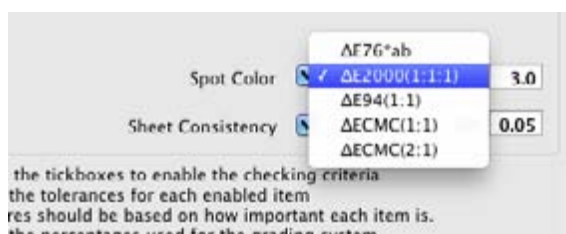
There is a new Job Settings window where standards, users, clients, colour bars, presses, and paper can be created and defined. Users with pressSIGN MSIS can also create sites.

This new window holds all the information about how pressSIGN will work with the current job. Who the client is, what site and printing device is being used, who the operator is and what paper are all defined here.

### **pressSIGN 5 supported devices**

pressSIGN 5 supports all of the following devices: X-Rite Eye-One old and new, SpectroEye, 530, EasyTrax S, Intellitrax S, Techkon SpectroDrive & SpectroJet, Barbieri LFP

### **New Spot Colour Delta E Formula supported**



### **Third party connectivity**

pressSIGN 5 works with a wide variety of third-party closed loop including Digital Information, Rutherford, PrintFlow and GMI.